

New theory test questions

Core questions (C)

C1 You must turn on your vehicle's headlights when you can't clearly see a person or vehicle:
100 metres away.

[Night Driving](#)

C12 Under normal driving conditions, what rule should you use to allow a safe following distance?

The 2 second rule

[Following distance](#)

C15 When driving at night on a road with lanes you must be able to stop in half the length of clear road you can see in front of you. True or false?

True False

[Night Driving](#)

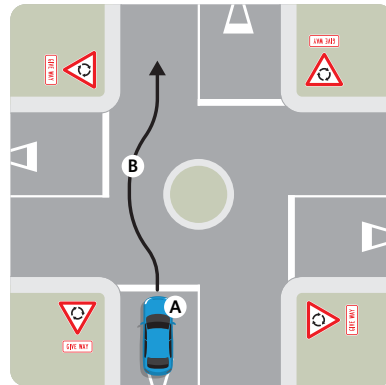
C19 The legal definition of a road includes beaches, bridges, carparks, streets and motorways. True or false?

True False

[What is a road?](#)

C32 How must you signal when travelling straight ahead at a roundabout?

Left signal at B only



[Receiving signals](#)

C38 When coming out of a driveway you must give way to anyone using a footpath, cycle path, shared path or the road. True or false?

True False

[Giving way at intersections](#)

C39 You're driving along a road with an 80km/h speed limit. There's a 100km/h speed limit sign ahead. When can you start to increase your speed?

When you reach the sign

[Safe speed guidelines](#)

C40 You're driving along a road with an 80km/h speed limit. There's a 60km/h speed limit sign ahead. When must you be going 60km/h?

At the 60km sign

[Safe speed guidelines](#)

C41 You're driving slower than the speed limit and notice there are vehicles following you. What should you do?

Find a safe place to pull over and let the following vehicles pass

[Slow drivers](#)

Signs and markings questions (S)

S3 This sign recommends a safe speed of 35km/h for the curve in good driving conditions. True or false?

True False



[Curve warning signs](#)

S21 What must you do at a give way sign?

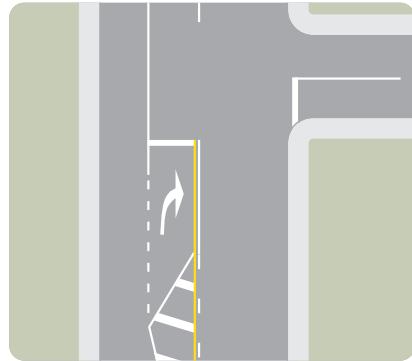
Slow down and be ready to stop



[Give way sign](#)

S26 Can you use a right-turn bay to overtake a vehicle travelling straight ahead?

Yes No



[Making a right turn from a left-hand bay](#)

S39 What does this sign mean?

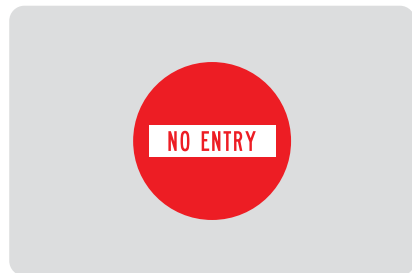
You must not turn left into this road at any time



[Compulsory signs](#)

S40 What does this sign mean?

You must not drive into this road at any time



[Compulsory signs](#)

S41 What does this sign mean?

Bus lane that can also be used by cycles, motorcycles, Mopeds



[Compulsory signs](#)

S42 What does this sign mean?

Bus lane that can only be used by buses



[Compulsory signs](#)

S43 You're driving along a beach where this sign is displayed. There are people on the beach up ahead. What is the speed limit?

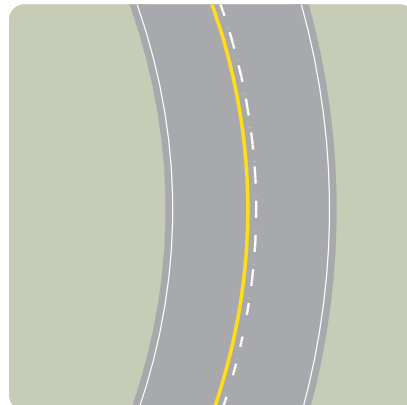
30km/hr



[Beach and river variable speed limit signs](#)

S44 What does a solid yellow line on your side of the centre line mean?

You must not cross over the centre line



[Yellow centre line](#)

S45 What does this marking painted on the roadway mean?

Cyclists can take the lane



[Passing a cyclist](#)

S46 What does this sign mean?

You must not stop here between
7am and 9am



[Parking signs](#)

S47 You are coming up to some roadworks and see a roadworker holding out this sign. What must you do?

Stop and stay stopped until the
sign is changed



[Roadworks](#)

Behaviour questions (B)

B6 When passing a cyclist, how much room should you allow?

1.5 metres

[Responsible driving](#)

B15 Can you use a hand-held cellphone for calls while driving?

No

[Responsible driving - cellphones](#)

B17 Alcohol can seriously affect your driving. It can slow your reaction times and affect your senses. True or false?

True False

[Alcohol and drug limits](#)

B38 Drugs, including drugs prescribed by your doctor, may affect your driving. They can slow your reaction times and affect your senses. True or false?

True False

[Alcohol and drug limits](#)

B39 Are you allowed to make a U-turn on a motorway?

No

[Making a U-turn](#)

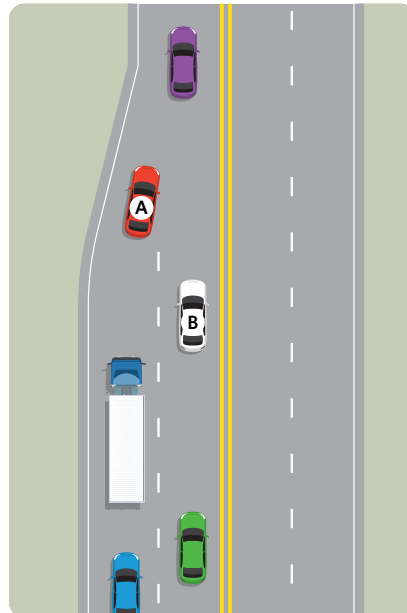
B40 Can you use a hand-held cellphone when driving to create, send or read a message?

No

[Responsible driving - cellphones](#)

B41 What is the best way to merge when 2 lanes are merging into one lane?

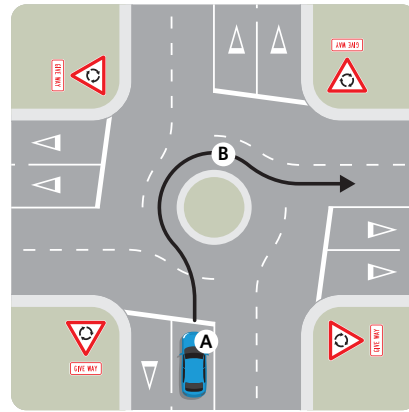
A vehicle from lane A goes and then a vehicle from lane B goes - merge like a zip



[Merging](#)

B42 How must you signal when turning right at a roundabout?

Right signal at A and then left signal at B

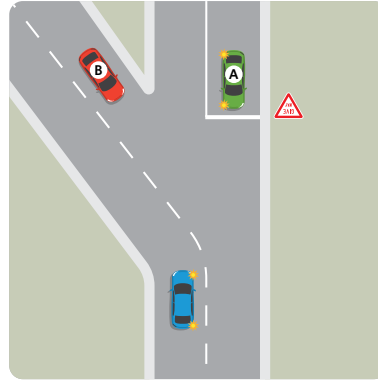


[Signal use at roundabouts](#)

Intersection questions (I)

- I30** You are the driver of the blue car.
Who must you give way to?

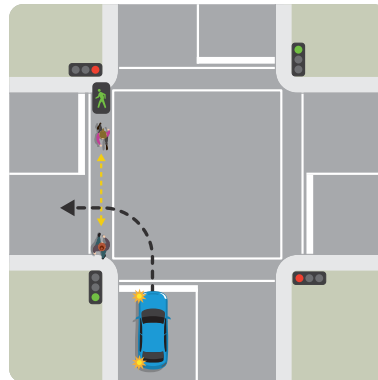
Vehicle B



[The give way rules](#)

- I35** Does the blue car have to give way?

Yes



[Traffic signals](#)

- I36** You are the driver of the blue car.
Who must you give way to?

Vehicle C



[The give way rules](#)

- I37** You are the driver of the blue car.
Who must you give way to?

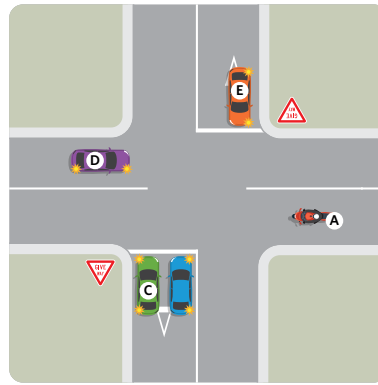
Vehicles C and D



[The give way rules](#)

I38 You are the driver of the blue car.
Who must you give way to?

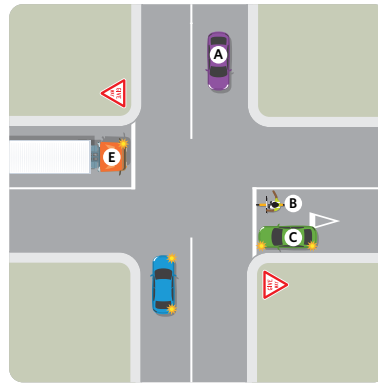
Vehicles A, D and E



[The give way rules](#)

I39 You are the driver of the blue car.
Who must you give way to?

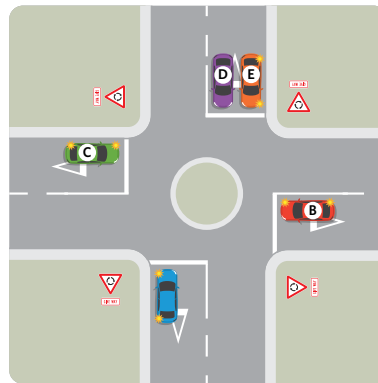
Vehicle A



[The give way rules](#)

I40 You are the driver of the blue car.
Who must you give way to?

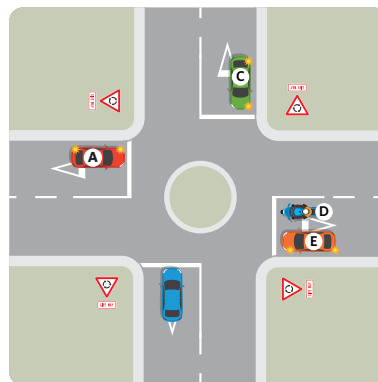
Vehicle B



[Giving way at roundabouts](#)

I41 You are the driver of the blue car.
Who must you give way to?

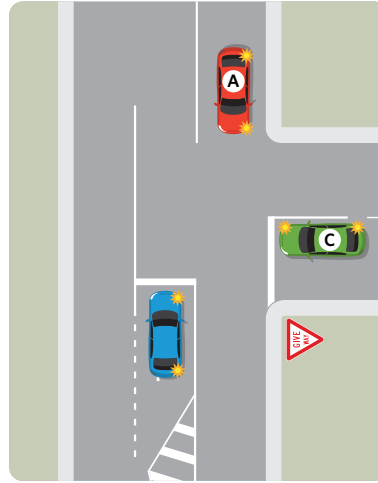
Vehicle D



[Giving way at roundabouts](#)

I42 You are the driver of the blue car.
Who must you give way to?

Vehicle A



[The give way rules](#)

I43 You are the driver of the blue car.
Do you have to give way to car B?

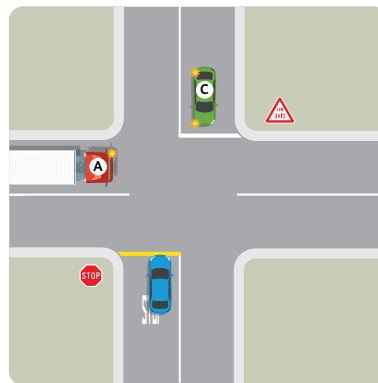
No



[The give way rules](#)

I44 You are the driver of the blue car.
Who must you give way to?

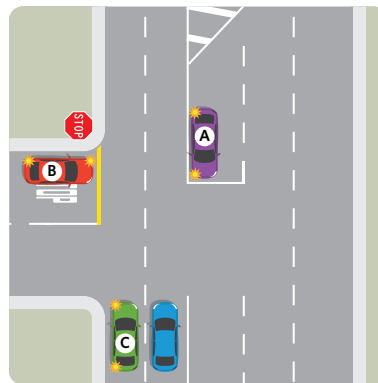
Vehicles A and C



[The give way rules](#)

I45 You are the driver of the blue car.
Who must you give way to?

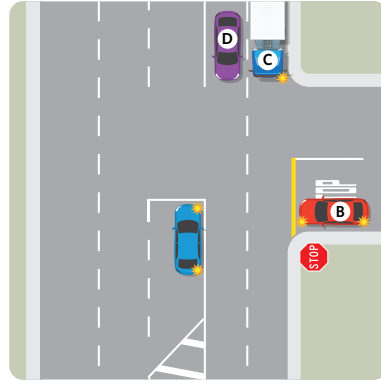
None



[The give way rules](#)

I46 You are the driver of the blue car.
Who must you give way to?

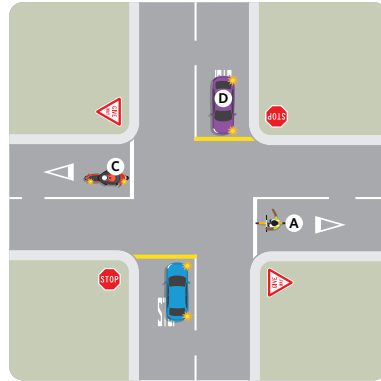
Vehicles C and D



[The give way rules](#)

I47 You are the driver of the blue car.
Who must you give way to?

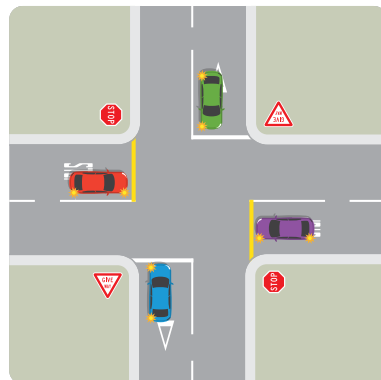
Vehicles A, C and D



[The give way rules](#)

I48 You are the driver of the blue car.
Do you need to give way?

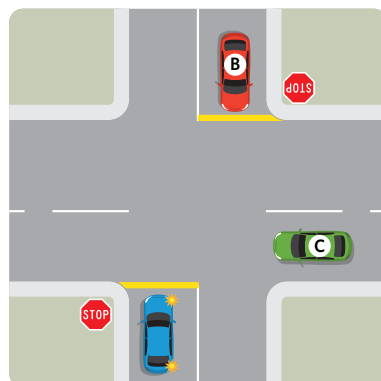
No



[The give way rules](#)

I49 You are the driver of the blue car.
Who must you give way to?

Vehicles B and C



[The give way rules](#)

Specialist questions for car drivers

- 17 When you have a learner licence you must always have a supervisor in the vehicle with you. Where in the vehicle must the supervisor sit?

In the front passenger seat alongside the driver

[Learner licence conditions](#)

- 23 What should you do if your car breaks down on a motorway?

Lift up your car's bonnet and boot and turn on your hazard lights to warn approaching traffic

[Breakdowns](#)

- 25 Where must a learner driver display L plates on a car?

Attached to the front and rear of the vehicle in a position where it is clearly visible to other road users



[L plates](#)